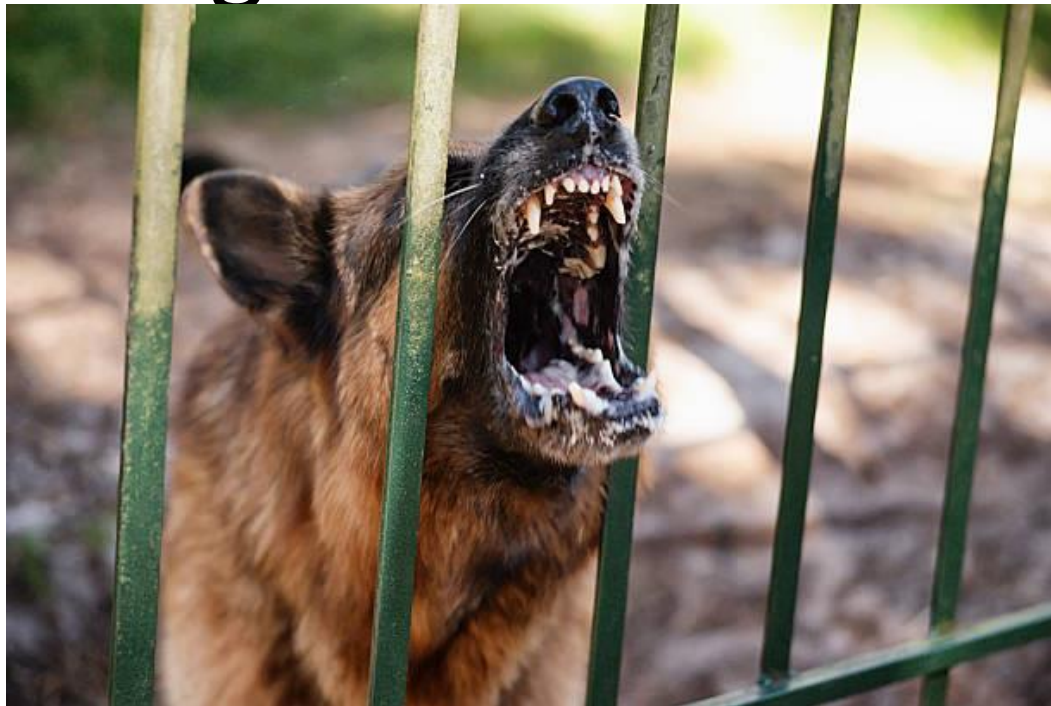




MTRMA Members

Dog Bite Prevention





MTRMA Members

- **Statistics**
- **Dog Bites**
- **Prevention**
- **Summary**





MTRMA Members

Statistics

[Sources: MTRMA]

MTRMA members over the last 24 months have sustained 12 dog bite incidents. These 12 incidents total at \$105,169.79 Incurred Cost with an average of \$8,764.15 per claim.



MTRMA Members

Although “Dog Bites” are one of the leading injuries to delivery drivers, preventing dog bites are the responsibility of EVERYONE within a company, NOT just management and NOT just employees





MTRMA Members

Dog Bites

- **Dogs bite to protect territory**

Ex: Driver entering yard to place package on porch.

- **Dogs bite when threatened.**

Ex: A mother has puppies and is scared.

- **Dogs bite when startled or scared**

Ex: The gate slams loudly after the driver enters the yard.

Dog bites can result in serious injury, and possibly even death.



MTRMA Members

Preventing Dog Bites

- Evaluate the yard for signs and evidence of a dog
- Develop an escape route that directly leads to safety
- If a dog is present verify that it is restrained
- Anticipate that even restrained dogs can escape
- If faced with a dog, do not look it in the eyes

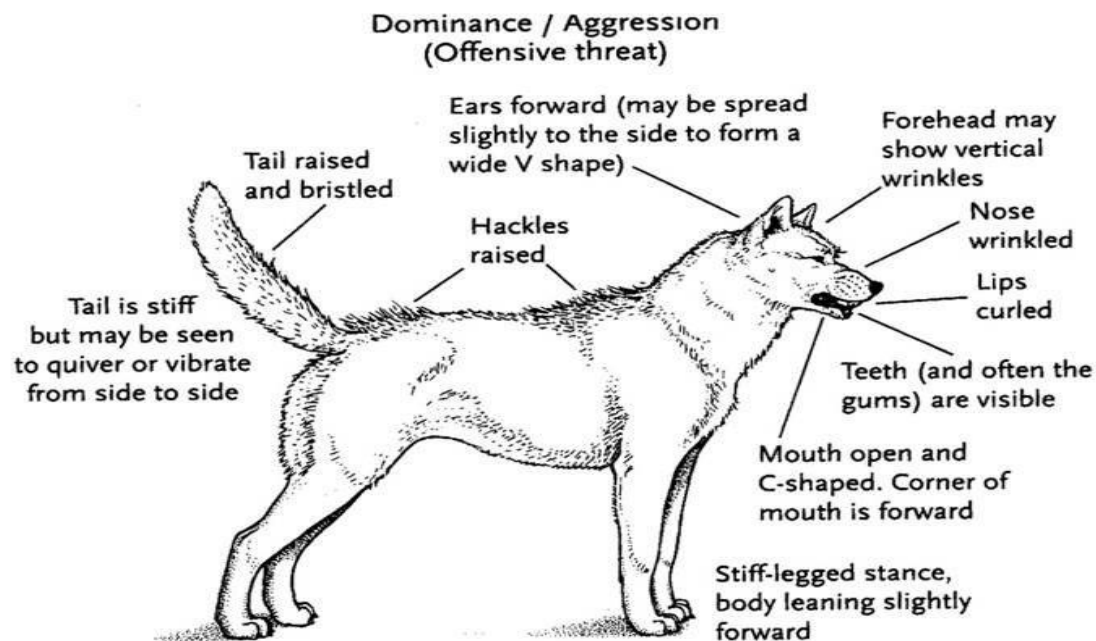




MTRMA Members

Aggressive Signs

- Aggressive dogs can exhibit physical characteristics as shown below.
- These provide warning signs but not all dogs will exhibit these before an attack.





MTRMA Members

Prevention Tools

- Dog Treats may distract an aggressive dog and allow the individual time escape.
- Dogs associate these treats with kindness and may deescalate the situation.





MTRMA Members

Prevention Tools Cont.

- Dog Safe Spray a strong but dog safe spray that deters a dog from attacking.
- Dog Spray should be utilized due to dogs sensitive nose, human orientated pepper spray would severely harm the dog. Found at <http://bulliray.com/>





MTRMA Members

Prevention Tools Cont.

- Ultra Sonic Noise as shown below.
- Ultra-Sonic Noise fobs can emit ultra sonic noise up to ~20 feet safely deterring a dog from attacking.





MTRMA Members

Prevention Tools Cont.

- Bulli Ray Bite stick and barrier device (Heavy duty umbrella) as shown below.
- These provide a barrier between the employee and the attacking dog.
- Found at <http://bulliray.com/>





MTRMA Members

Dog Do's

- Look for “Beware of Dog” signs
- Look for toys, leashes and beds
- Use packages as a barrier
- Be Alert
- Utilize dog reats to deter
- Utilize dog deterrents such as bite sticks or ultra sonic noise
- Plan an escape route
- Stay Calm
- Communicate to the owner to restrain dog
- If injured, call 911 to obtain a police report



MTRMA Members

Dog Don'ts

- Don't Make sudden movements
- Don't Assume that it is a friendly dog
- Don't Panic
- Don't act aggressive to the dog
- Avoid Eye contact
- Make loud noises
- Turn your back to the dog
- Risk the delivery if it is unsafe
- FORGET TO COMMUNICATE the exposure to an aggressive dog



MTRMA Members

Near Misses

- You have a “close call” with a dog but are not injured
- Dispatch must be notified
- This address must be marked and communicated “Dog, High Risk”
- Contact owner and indicate that deliveries cannot be completed with an unrestrained dog
- Communicate the near miss with dispatch



MTRMA Members

Dog Bites

1. Get to a safe location
2. Call emergency medical assistance if needed
3. Notify Law Enforcement and OBTAIN police report
4. Cover your wounds and apply pressure to reduce bleeding
5. Notify your supervisor and company safety resource



MTRMA Members

Documenting an Incident

1. Document the following in the
 - Date
 - Time
 - Address
 - Reason for failed delivery
 - Any communication with resident regarding the dog
 - Mark address as “CAUTION DANGEROUS DOG” in company APP



MTRMA Members

Communicating an Incident

1. Employer shall provide drivers with resources to identify hazardous stops pre-delivery
2. This includes “DANGEROUS DOGS”
3. Employees shall document these addresses and dogs
4. Employer shall communicate these high risk addresses to ALL drivers on that route or FUTURE drivers on route
5. Employer shall conduct trainings, tool box talks and risk reminders to high light key learnings from incidents and near misses.



MTRMA Members

Summary

- Dog bites can result in potentially life threatening injuries
- For employees these can be life changing and for employers very costly.
- Implementing safe work practices and controlling hazards can help lead to fewer dog bites within your company.
- Utilizing these Do's & Don'ts can potentially reduce dog bites

